

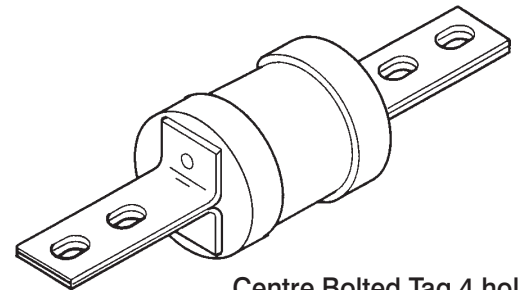
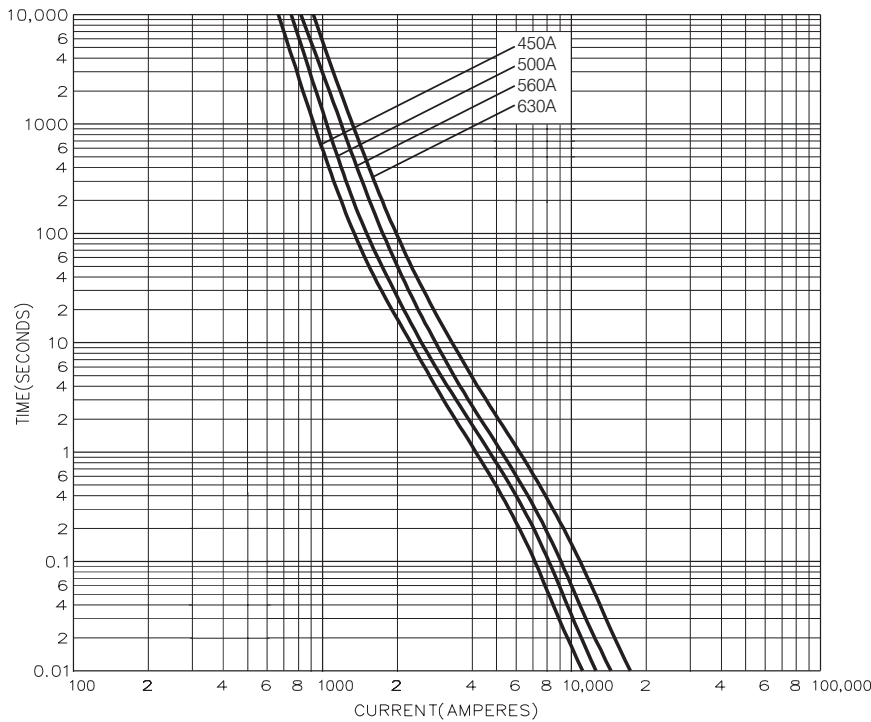
# BS88, IEC269 Industrial HRC Fuse Links

## Centre Bolted Tags 4 holes 550V ac 400V dc 450 - 630 Amps

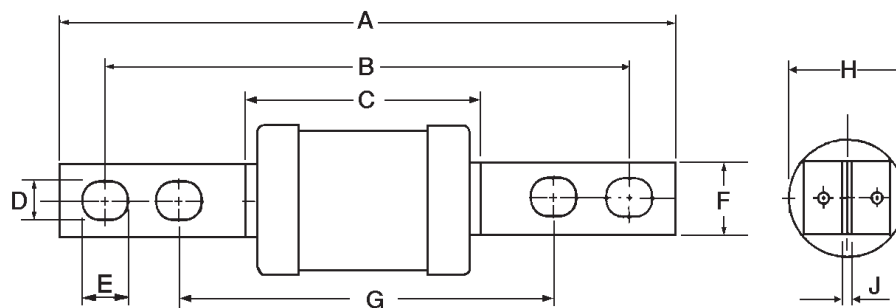
FF

### Time-Current Characteristic Curves

Non Motor Rated



Centre Bolted Tag 4 hole



Dimensional Data

Catalog Number	I <sup>2</sup> t (Amps <sup>2</sup> Seconds x 10 <sup>3</sup> )			Nom. Watts Loss	Rated Voltage	Dimensions (mm)									
	Amp Ratings	Pre-Arcing	Total at 415V			A	B	C	D	E	F	G	H	J	
FF450	450	850	1600	32	550 ac 400 dc	210.0	185.0	77.5	10.5	15.5	25.4	134	74.0	6.4	
FF500	500	1100	2000	38											
FF560	560	1400	2400	43											
FF630	630	2000	3500	50											

Packaging - 1 per carton

This bulletin is intended to clearly present comprehensive product data and provide technical information that will help the end user with design applications. Bussmann reserves the right, without notice, to change design or construction of any products and to discontinue or limit distribution of any products. Bussmann also reserves the right to change or update, without notice, any technical information contained in this bulletin. Once a product has been selected, it should be tested by the user in all possible applications.

**Bussmann Division**  
**Cooper (U.K.) Ltd**  
 Burton-on-the-Wolds  
 Leicestershire, LE12 5TH  
 United Kingdom  
 Tel: (44) (0)1509 88 27 37  
 Fax: (44) (0)1509 88 27 86

Head Office  
 St. Louis, MO, U.S.A. Tel: (314) 527-3877 Fax: (800) 544-2570 International Fax: (314) 527-1445



Bussmann Information Fax (00 1) 314 527 1450  
 Bussmann WEB site - <http://www.bussmann.com>

A **COOPER** Industries Company